

Guidelines for washing of lab coats in DNAS

A washing machine and a dryer has been set up in WDR 2214 for DNAS use.

This setup is for the sole purpose of washing lab coats used by faculty, staff, interns and students working in DNAS labs. Other lab coats washing requests may be considered on a case-by-case basis.

Timeslots for washing lab coats are on Tuesdays and Thursday excluding university and public holidays. Requests for timeslots must be made using the following link:

https://calendly.com/lynsey_xinli/30min

Please follow the instructions for using the washing machine and dryer (Appendix). User will be responsible for any malfunction of the washing machine or dryer due to improper usage.

A quick wash should be done in between each use to minimize cross-contamination.

Note that a maximum of 6 lab coats can be washed and dried in one cycle, and the frequency of washing should be no more than once a month

Washing Machine SOP

Step 1:

- Turn on the power 开机.



Long press the power button turn on/off the machine.

长按电源键，有开机提示音，控制面板亮起，机器进入待机状态。

Step 2:

Put your lab coats in the machine
(No more than 6 pieces each time)
放入实验服，每次清洗不要超过 6 件

Step 3:

Choose Procedure 选择洗涤程序

For lab coat washing, we recommend the "Sanitize Procedure"



Press the **red** button twice and the second procedure will light up (**blue box**).

推荐使用消毒洗程序清洗实验服，点击“特色洗”，选择“消毒洗”程序

Step 4:

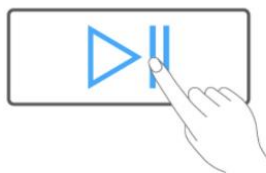
Pour detergent 倒洗衣液



Detergent
in this box

Disinfectant to this box.

Step 5:



按此键启动，开始洗衣

*若洗衣机正在运行，按此键会暂停工作。

Press start button to start

Step 6:

Finished 洗涤完成



干衣结束会有声音提示，显示屏显示 End 字样，此时可打开机门取出衣物，切断电源。

The screen displays "End" with music prompt, indicate the end of washing. Take out the clothes and turn off the power.

Attention:

The sink next to the washing machine cannot be used while the washing machine is working.

洗衣机运行过程中旁边水池的水龙头禁止打开

Washing Machine procedure and Icons introduction

Choose Procedure

- Mix
- Speed wash
- Bulky/Large
- Energy saver
- Rinse + Spin
- Spin
- Tube clean

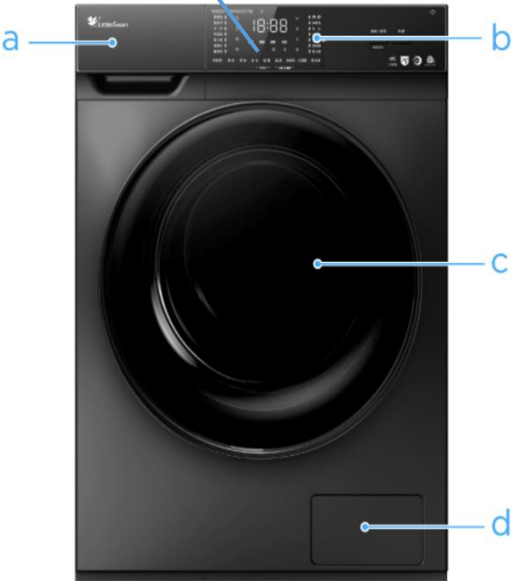


- Cotton
- Sanitize
- Shirt
- Coat
- Wool
- Down jacket
- Baby clothes

These two buttons select the corresponding wash mode above

Icon introduction

	图标	功能	图标	功能
reserve		预约		无线网络
Lock		门锁	洗涤剂投放	
Kids lock		童锁	L-1	1档
Pre-wash		预洗	L-2	2档
Washing		洗涤	L-3	3档
Rinse		漂洗	L-4	4档
Spin		脱水	AU	智能投放
Tub-Clean		筒自洁	OFF	手动投放
Detergent		洗涤剂		
UV sterilization		UV除菌		



- a 洗涤盒 | b 控制面板 | c 洗衣机门
d 过滤器门

a: Detergent dispenser b: Control panel c: Door
d: Drain Pump/Draining Residual Water

Dryer SOP

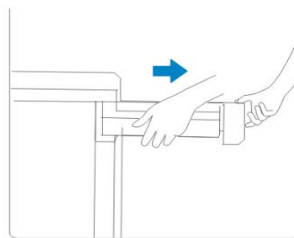
Step 1:

Check the water container (In the upper left)

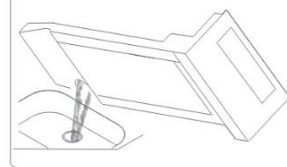
Every time before using, please empty the water in the container.



a | 清空水容器



① 关闭电源，取出水容器



② 清空水容器里面的水，装回原位

① 注意

- 请勿扣水容器盒上蓝色盖子!
- 每次使用后请清空水容器!

Step 2:

Turn on the power and put your washed lab coats in (No more than 6 pieces each time)

开机并放入洗好的实验服，每次清洗不要超过 6 件

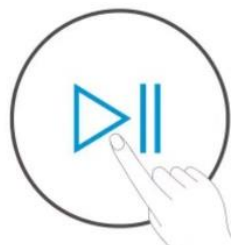
Power



Start/Pause

Step 4:

Start drying 开始烘干



Press start button to start

轻触按键启动，开始干衣

*若干衣机正在运行，按此键会暂停工作。

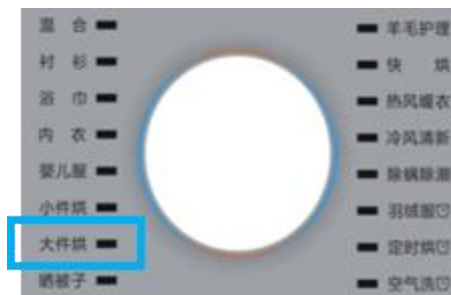
Step 3:

Choose Procedure 选择烘干程序
For lab coat dryer, we recommend the "Bulky/Large"

推荐使用大件烘程序清洗实验服，

Turn the knob until the second from bottom procedure (blue box) lights up

旋转旋钮直到大件烘程序灯亮起



Step 5:

Finished 烘干完成



干衣结束会有声音提示，显示屏显示 End 字样，此时可打开机门取出衣物，切断电源。

The music prompt indicates the end of washing, take out the clothes and turn off the power

Dryer procedure and Icons introduction

a 水容器 | b 控制面板 | c 干衣机门
d 活动盖板 | e 风扇盖板 |

d | 选择干衣程序 Chose Procedure

Mix 混合	羊毛护理	Wools
衬衫	快烘	Quick Dryer
Towels 浴巾	热风暖衣	
内衣	冷风清新	
婴儿服	除螨除潮	Remove mites & moisture.
Small pieces 小件烘	羽绒服	
大件烘	定时烘	
Large pieces 晒被子	空气洗	

a: water container b: control Panel c: Door
d: wiring box e: venting hole

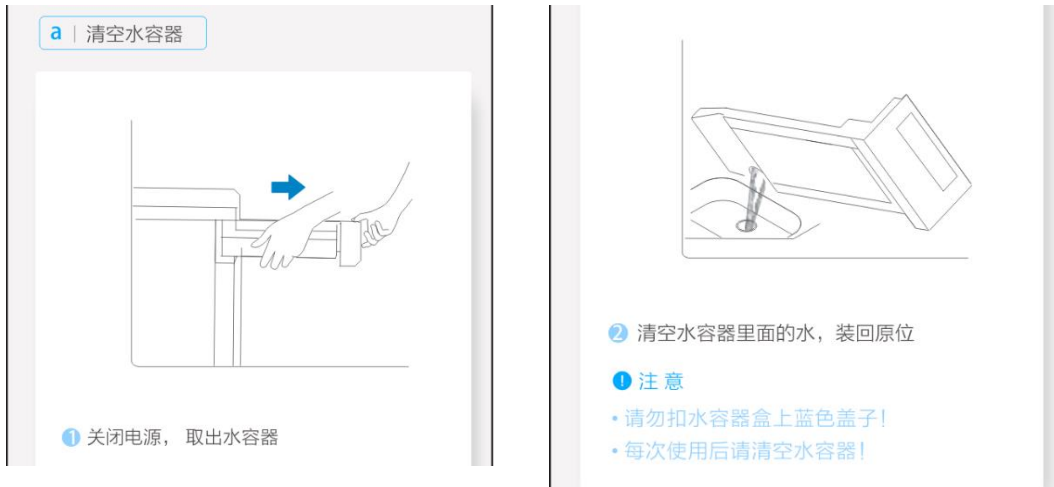
显示图标介绍

Icon introduction

图标	功能	图标	功能
Empty water container	清空水容器	门锁	Lock
Clean lint screen	清理过滤网	童锁	Kids lock
Moisture proof	智能防潮	预约	
	智能防皱	定时	
	无线网络	时间显示/ 报警提示 信息	
Sanitary	多维除菌		

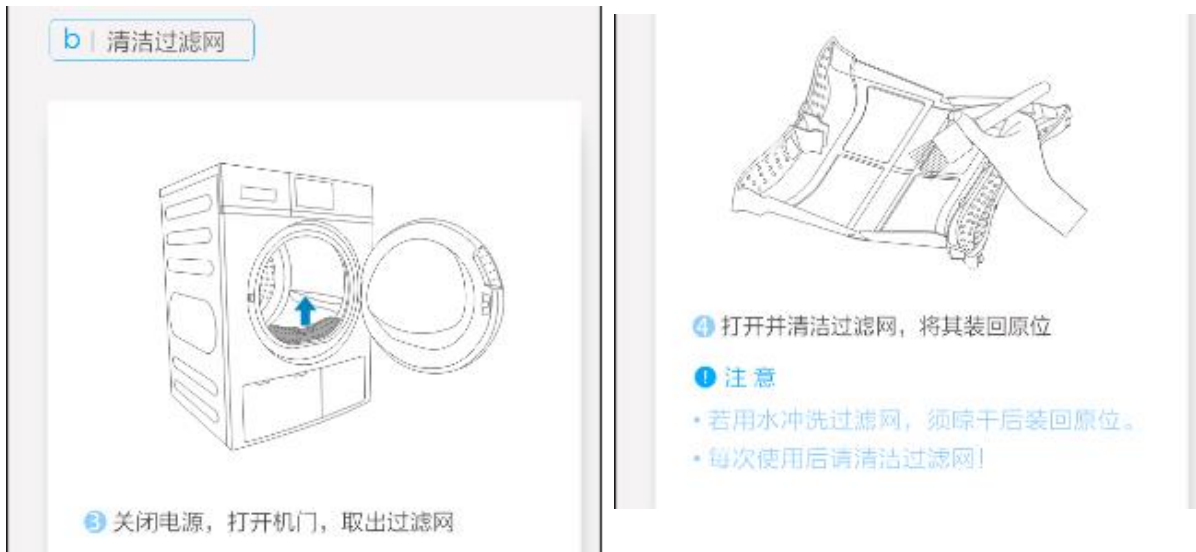
Daily Cleaning (Important!)

a. Clean the water container. (every time after using)



Cut off the power then empty the water container (In the upper left of the Dryer)

b. Clean the lint screen.



1. Cut off the power

2. Wet both sides of lint screen with water.

3. Wet a nylon brush with water and liquid detergent; scrub lint screen with the brush to remove residue buildup.

4. Thoroughly dry lint screen with a clean towel; put in dryer.